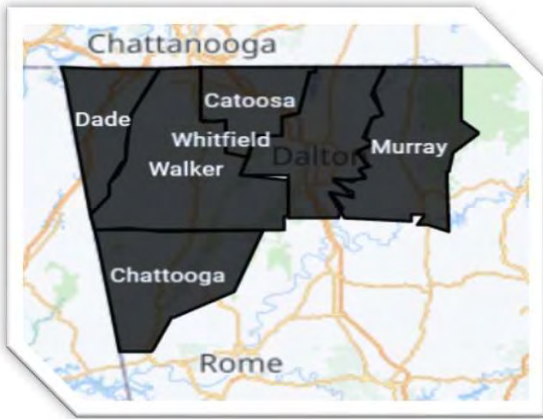


**FAMILY RESOURCE AGENCY OF NORTH GEORGIA 2021-2022 ANNUAL REPORT**

**Service Area: Six Northwest Counties in Georgia**



County	EHS	HS	HS/PreK	CCP	Total
Catoosa	48	101	20	16	185
Chattooga	56	34	0	0	90
Dade	16	34	0	16	66
Murray	24	34	0	16	74
Walker	64	85	40	16	205
Whitfield	104	165	20	32	321
<b>Total children</b>	<b>312</b>	<b>453</b>	<b>80</b>	<b>96</b>	<b>941</b>
<b>Total Classes</b>	<b>39</b>	<b>27</b>	<b>4</b>	<b>12</b>	<b>82</b>
<b># of Staff</b>					<b>253</b>



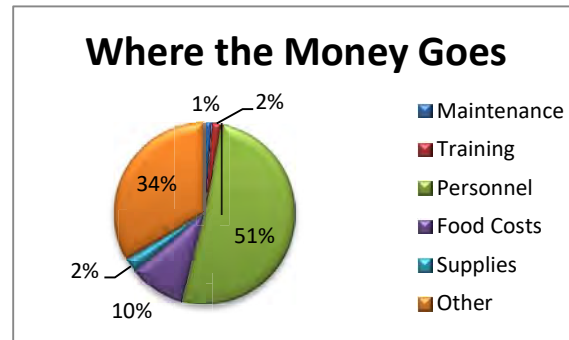
**Budget Information**

2021-2022	Maintenance	Training	Personnel	Food Costs	Supplies	Other	Total
Head Start	\$91,234	\$122,937	\$3,340,091	\$521,662	\$194,120	\$1,679,502	\$5,949,546
Early Head Start	\$74,187	\$111,910	\$3,431,950	\$370,152	\$122,951	\$2,664,775	\$6,775,924
EHS-Child Care Partnership	\$14,744	\$39,305	\$687,074	\$51,961	\$66,964	\$796,608	\$1,656,655
Head Start Carry Over							
CACFP-HS				\$330,099			\$330,099
CACFP-EHS				\$229,217			\$229,217
CACFP-EHS/CCP				\$23,268			\$23,268
Georgia Pre-K	\$4,033	\$900	\$370,217*		\$6,844	\$10,956	\$392,949
<b>Totals</b>	<b>\$184,197</b>	<b>\$275,052</b>	<b>\$7,829,332</b>	<b>\$1,526,359</b>	<b>\$390,878</b>	<b>\$5,151,840</b>	<b>\$15,357,658</b>

\*covered by HS

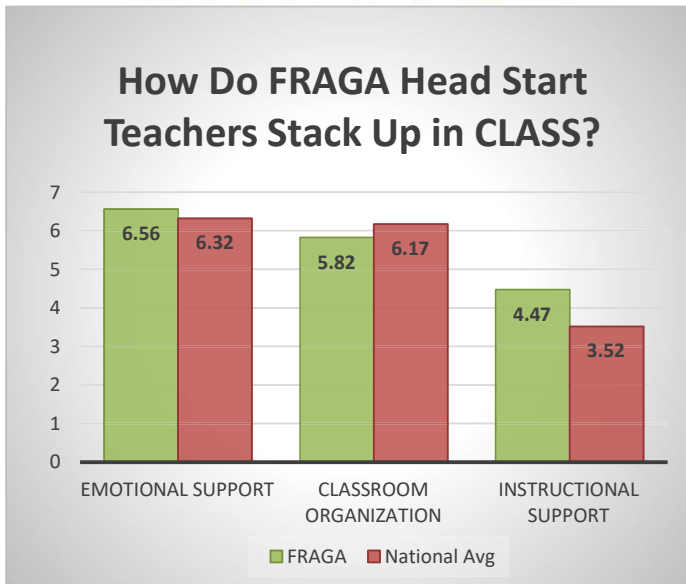
\*\*Overage covered by HS

Revenue source	Budget 2021-2022
Head Start	\$5,949,546
Early Head Start	\$6,775,924
EHS-Child Care Partnership	\$1,656,655
CACFP-HS	\$330,099
CACFP-EHS	\$229,217
CACFP-EHS-CCP	\$23,268
Georgia Pre-K	\$392,949
<b>Totals</b>	<b>\$15,357,658</b>

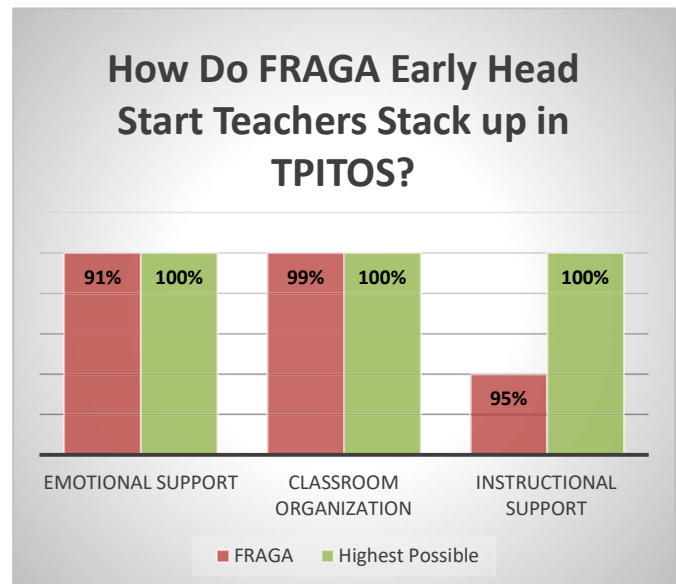


FAMILY RESOURCE AGENCY OF NORTH GEORGIA 2021-2022 ANNUAL REPORT

Program Information					
Regulatory Monitoring		Child/Family Data for 2021-2022			
Agency	Compliant	Criteria	EHS	HS	EHS-CCP
Federal Review	Yes	Total children enrolled	312	461	97
Licensing Reviews	Yes	Pregnant women enrolled	32	n/a	n/a
Annual Audit	Yes	Average monthly enrollment	100%	100%	100%
Quality Rated	Yes	Over income children	2.0%	5.0%	0.0%
CACFP	Yes	Mid-range income children	10.0%	17.0%	15.0%
		Families enrolled	449	621	97
		Children with disabilities	11.0%	13.0%	11.0%
		Children with up-to-date, age appropriate health care	60%	71%	61%
		Children with up-to-date age appropriate immunizations	99%	99%	99%
		Children with up-to-date age appropriate dental care	96%	97%	96%
		Pregnant women enrolled	41%	44%	10%
		Homeless families	27	25	8
		Children in Foster Care	21	15	0
		Volunteers	10	12	26



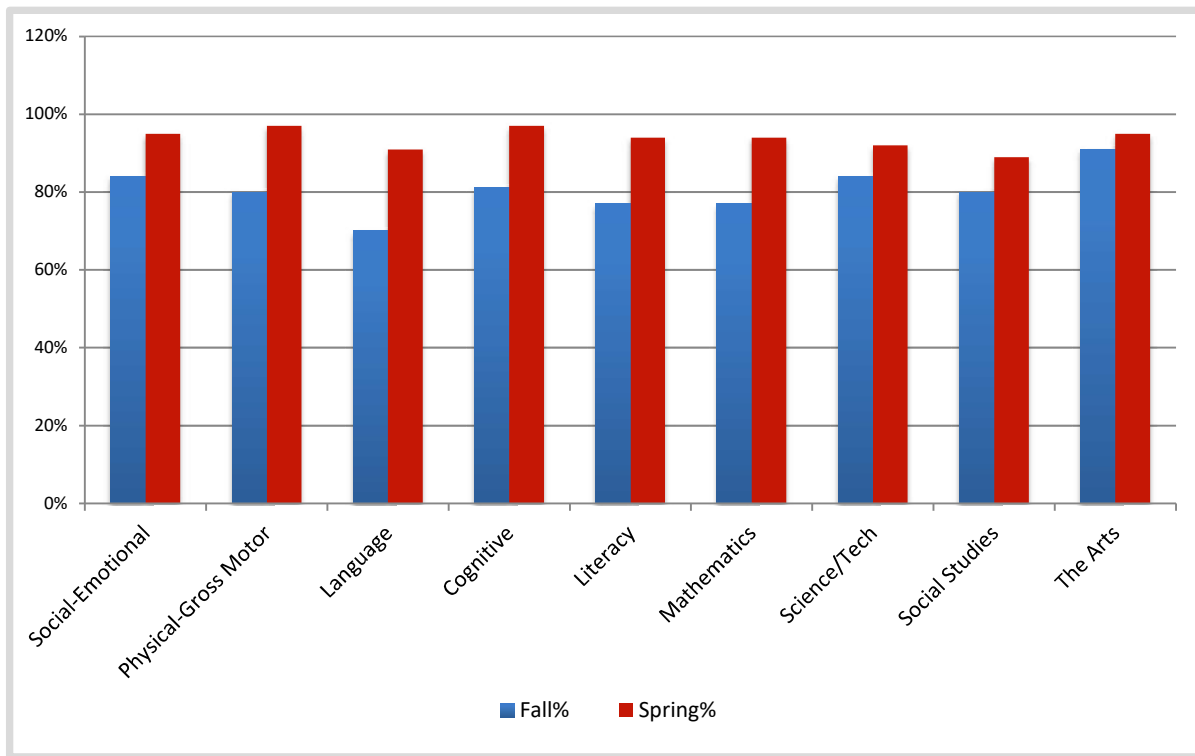
\*Based on a 7 possible total score



\*Based on a 100% possible total score

**FAMILY RESOURCE AGENCY OF NORTH GEORGIA 2021-2022 ANNUAL REPORT**

**Child Outcomes Birth-Five 2021-2022**



**Family Outcomes 2021-2022**

