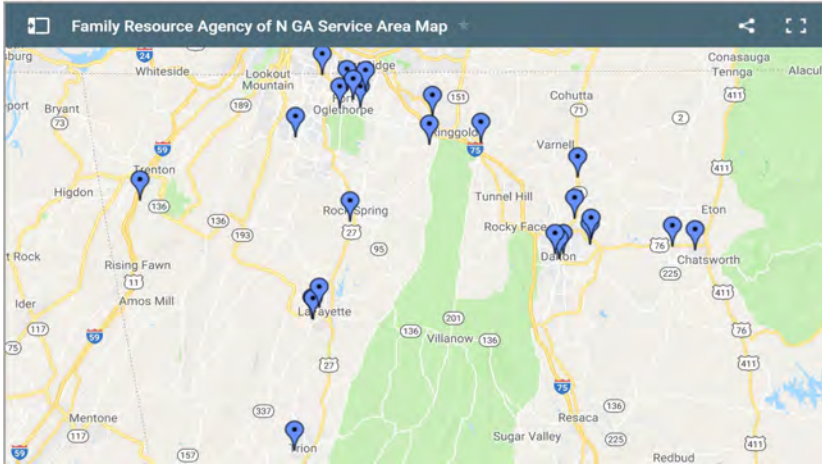


FAMILY RESOURCE AGENCY OF NORTH GEORGIA 2020-2021 ANNUAL REPORT

Service Area: Six Northwest Counties in Georgia



County	EHS	HS	HS/PreK	CCP	Total
Catoosa	48	101	20	16	185
Chattooga	56	34	0	0	90
Dade	16	34	0	16	66
Murray	24	34	0	16	74
Walker	64	85	40	16	205
Whitfield	104	165	20	32	321
Total children	312	453	80	96	941
Total Classes	39	27	4	12	82
# of Staff					253



Budget Information

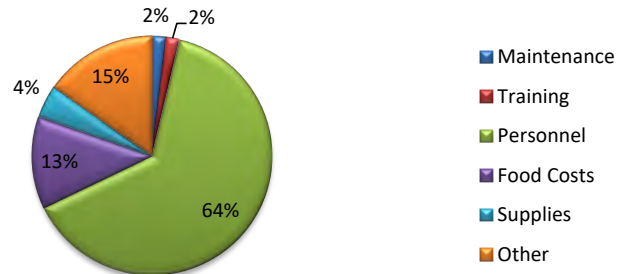
2020-2021	Maintenance	Training	Personnel	Food Costs	Supplies	Other	Total
Head Start	\$99,267	\$73,621	\$3,258,811	\$539,748	\$266,278	\$534,716	\$4,772,440
Early Head Start	\$118,979	\$112,753	\$3,655,891	\$415,854	\$252,361	\$609,304	\$5,165,142
EHS-Child Care Partnership	\$12,788	\$37,065	\$699,306	\$36,468	\$19,927	\$723,676	\$1,529,230
Head Start Carry Over							
CACFP-HS				\$328,346			\$328,346
CACFP-EHS				\$194,982			\$194,982
CACFP-EHS/CCP				\$24,282			\$24,282
Georgia Pre-K	\$432	\$1,193	\$318,204		\$4,457	\$23,992	\$348,278
Totals	\$231,466	\$224,632	\$7,932,212	\$1,539,680	\$543,023	\$1,891,688	\$12,362,700

*covered by HS

**Overage covered by HS

Revenue source	Budget 2020-2021
Head Start	\$4,772,440
Early Head Start	\$5,165,142
EHS-Child Care Partnership	\$1,529,230
CACFP-HS	\$328,346
CACFP-EHS	\$194,982
CACFP-EHS-CCP	\$24,282
Georgia Pre-K	\$348,278
Totals	\$12,362,700

Where the Money Goes



Program Information

Regulatory Monitoring		Child/Family Data for 2020-2021			
Agency	Compliant	Criteria	EHS	HS	CCP

FAMILY RESOURCE AGENCY OF NORTH GEORGIA 2020-2021 ANNUAL REPORT

Federal Review	Yes
Licensing Reviews	Yes
Annual Audit	Yes
Quality Rated	Yes
CACFP	Yes

Total children enrolled	406	575	129
Pregnant women enrolled	55	n/a	n/a
Average monthly enrollment	100%	100%	100%
Over income children	1.0%	5.0%	0.0%
Mid-range income children	15.0%	23.0%	17.0%
Families enrolled	321	530	111
Children with disabilities	12.8%	12.0%	11.6%
Children with up-to-date, age appropriate health care	86%	74%	84%
Children with up-to-date age appropriate immunizations	92%	95%	92%
Children with up-to-date age appropriate dental care	37%	55%	14%
Families receiving assistance, education or intervention	31%	35%	10%
Homeless families	20	13	9
Children in Foster Care	11	14	5
Volunteers	33	43	24

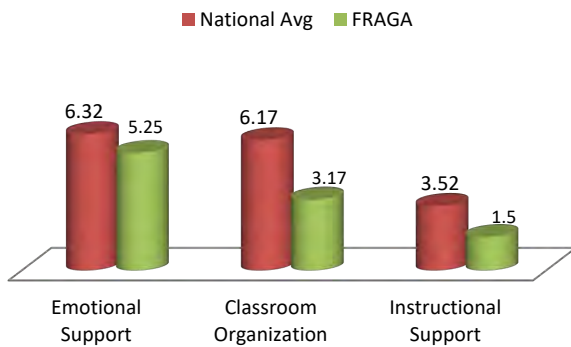


Classroom Assessment Scoring System®

TEACHING PYRAMID INFANT-TODDLER OBSERVATION SCALE

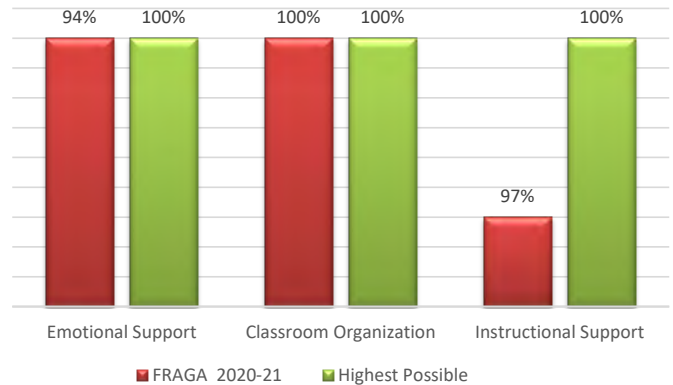


How Do FRAGA Head Start Teachers Stack Up in CLASS?



*Based on a 7 possible total score

How Do FRAGA Early Head Start Teachers Stack up in TPITOS?



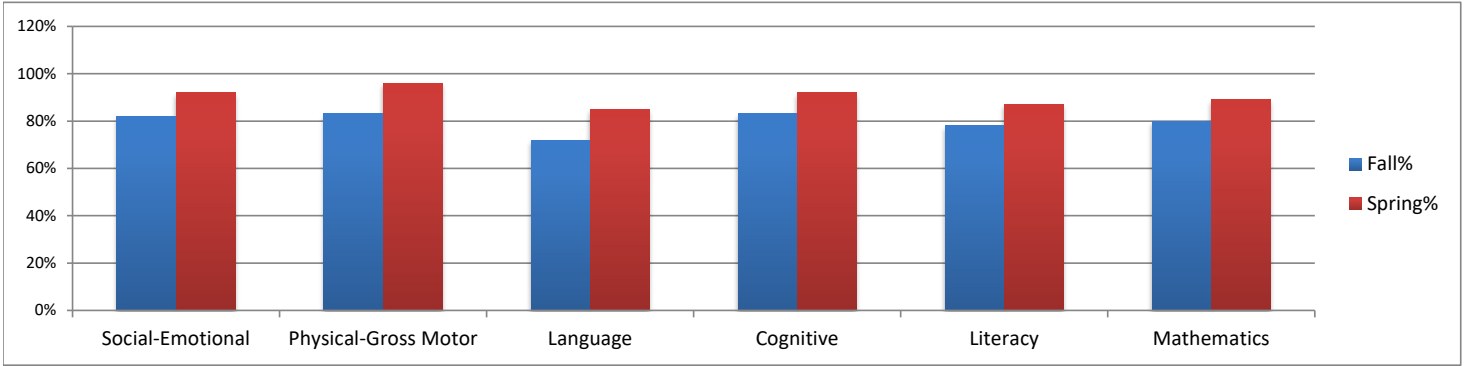
*Based on a 100% possible total score



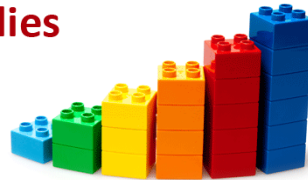
FAMILY RESOURCE AGENCY OF NORTH GEORGIA 2018-2019 ANNUAL REPORT



Child Outcomes Birth to Five 2020-2021



Building Strong Families



Head Start Family Outcomes 2021-21

