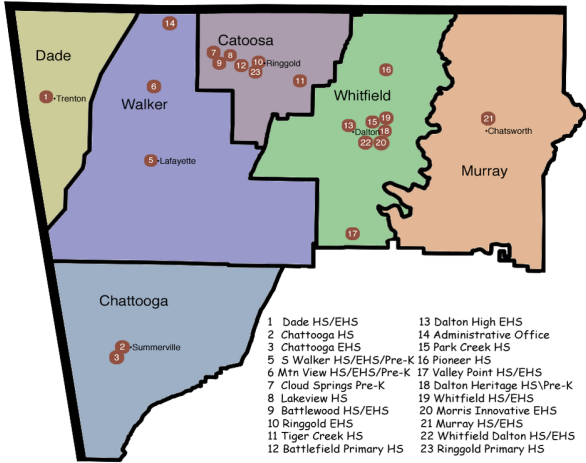


**FAMILY RESOURCE AGENCY OF NORTH GEORGIA ANNUAL REPORT 2014-2015**

**Service Area: Six Northwest Counties in Georgia**



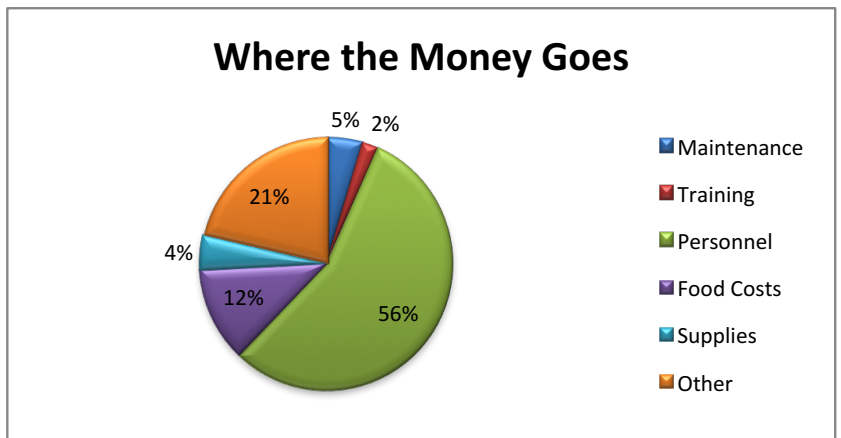
County	EHS	HS	HS/PreK	CCP	Total
Catoosa	32	85	20	32	169
Chattooga	48	31	20		99
Dade	32	34		16	82
Murray	24	51		16	91
Walker	48	102	40	16	206
Whitfield	96	150	20	16	282
<b>Total children</b>	<b>280</b>	<b>453</b>	<b>100</b>	<b>96</b>	<b>929</b>
<b>Total Classes</b>	<b>37</b>	<b>28</b>	<b>5</b>	<b>12</b>	<b>82</b>
<b># of Staff</b>	<b>113</b>	<b>110</b>	<b>10</b>	<b>19</b>	<b>252</b>

**Budget Information**

2015-2016	Maintenance	Training	Personnel	Food Costs	Supplies	Other	Total
Head Start	\$178,543	\$83,561	\$2,875,596	\$543,329	\$147,826	\$868,355	\$4,697,210
Early Head Start	\$82,835	\$84,901	\$2,972,774	\$398,283	\$110,102	\$735,909	\$4,384,804
EHS-Child Care Partnership	\$26,235	\$90,153	\$694,936	\$45,794	\$36,554	\$876,319	\$1,769,991
EHS-CCP Start-up	\$261,590				\$232,138	\$124,861	\$618,589
CACFP-HS				\$308,276			\$308,276
CACFP-EHS				\$172,564			\$172,564
CACFP-EHS/CCP				\$17,044			\$17,044
Georgia Pre-K	\$9,415	\$885	\$321,645	*	\$26,800	\$35,943	\$394,688
<b>Totals</b>	<b>\$558,618</b>	<b>\$259,500</b>	<b>\$6,864,951</b>	<b>\$1,485,290</b>	<b>\$553,420</b>	<b>\$2,641,387</b>	<b>\$12,363,166</b>

\*included in HS

Revenue source	Budget 2015-16
Head Start	\$4,970,649
Early Head Start	\$4,282,625
EHS-Child Care Partnership	\$2,611,616
CACFP-HS	\$323,419
CACFP-EHS	\$171,560
CACFP-EHS-CCP	\$31,281
Georgia Pre-K	\$330,375
<b>Totals</b>	<b>\$12,721,525</b>



**Fiscal Changes**

For the 2015-2016 budget year, we requested to convert 80 HS slots to 16 EHS slots but it was not approved until the 2016-17 budget. Therefore, we were granted the same funding as 2014-15. In addition, we received a \$2.611 million grant to serve an addition 96 Early Head Start children through the Early Head Start-Child Care Partnership Grant. Those totals will be reflected on the next annual report. There was no COLA increase or additional increases in funding.

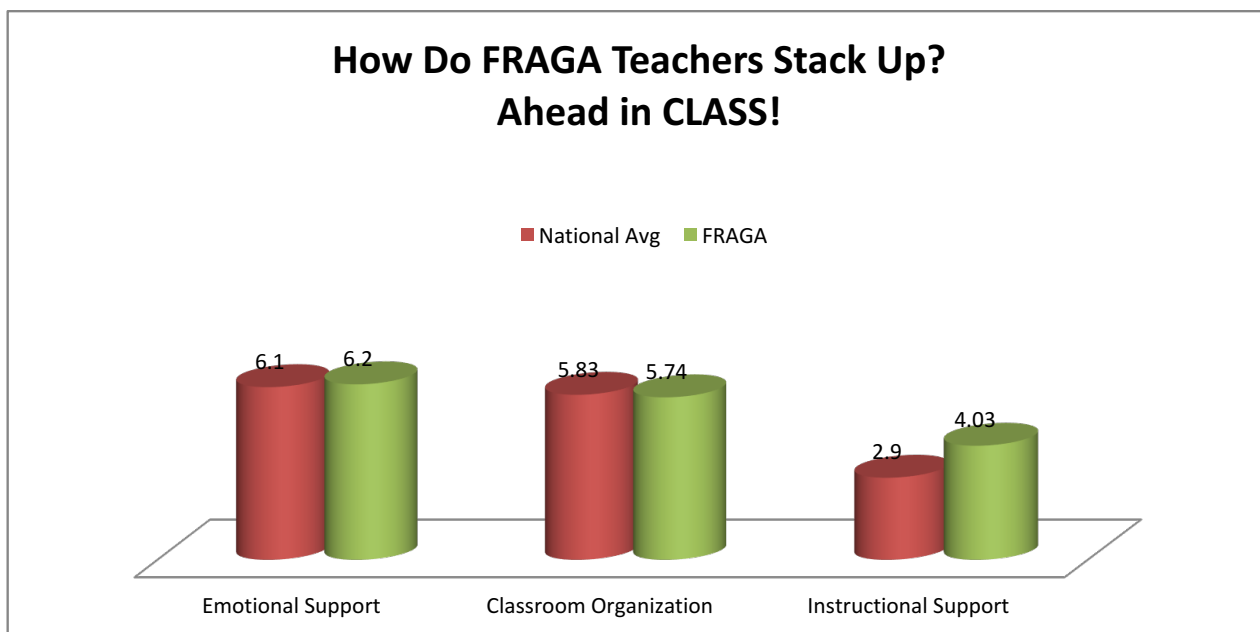
**Program Information**

Regulatory Monitoring	
Agency	Compliant
Federal Review	Yes
Licensing Reviews	Yes
Annual Audit	Yes
Quality Rated	Yes
CACFP	Yes

Child/Family Data for 2015-16			
Criteria	EHS	HS	EHS-CCP
Total children enrolled	344	674	112
Pregnant women enrolled	22	n/a	n/a
Average monthly enrollment	100%	100%	100%
Over income children	6%	8%	5%
Mid-range income children	11%	16%	18%
Families enrolled	313	640	102
Children with disabilities	10%	16%	13%
Children with up-to-date, age appropriate health care	90%	92%	84.80%
Children with up-to-date age appropriate immunizations	100%	100%	100%
Children with up-to-date age appropriate dental care	90%	88%	85%
Families who received some type of assistance, education or intervention	51%	75%	59%
Homeless families	6	5	2
Volunteers	146	514	17
Male Involvement	60	116	8

**CLASS**  
**Classroom Assessment Scoring System**

The CLASS tool uses observation results to help improve program quality and outcomes. CLASS focuses on the quality of teacher-child interactions and data gathered is used for program improvement and planning professional development. OHS has a minimum score requirement in three domains: Emotional Support, Classroom Organization, and Instructional Support.



**School Readiness, Child, and Family Outcomes**

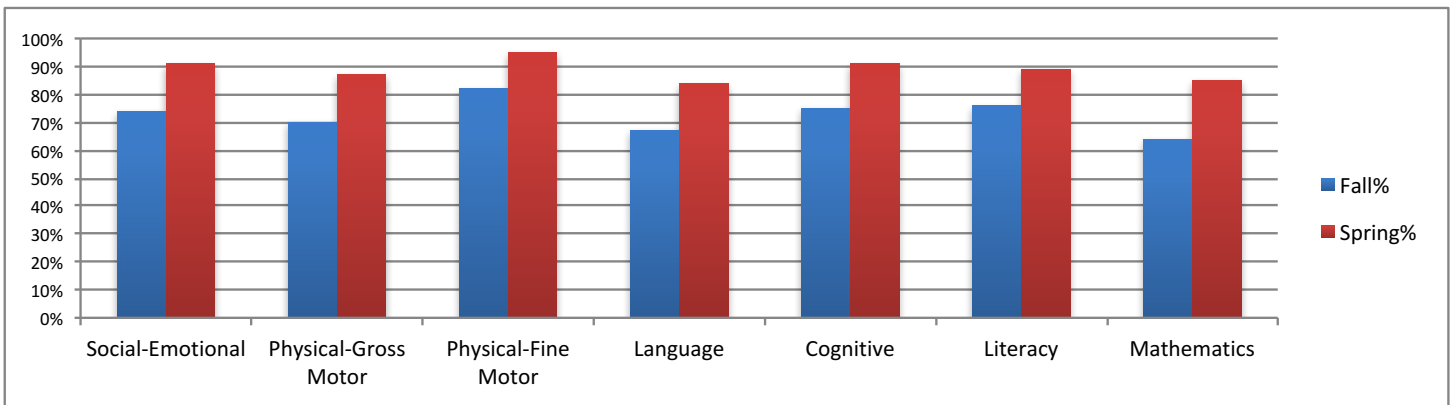
**School Readiness**

**5 Domains of School Readiness**

Family Resource Agency assesses and utilizes information gathered throughout the year on children’s status and progress across domains of language and literacy development, cognition and general knowledge, approaches to learning, physical well-being and motor development and social and emotional development that will improve their readiness for kindergarten. Parent and family outcomes are also evaluated to provide support for family engagement in preparing children to be ready for school. School Readiness Goals have been developed by the program in conjunction with the Board of Directors, Policy Council and the local school systems and are ongoing for children ages birth to five. School Readiness Goals can be accessed under the tab for School Readiness at [www.fragahs.com](http://www.fragahs.com)

- \* **Cognition and General Knowledge**
- \* **Physical Development and Health**
- \* **Social and Emotional Development**
- \* **Language and Literacy**
- \* **Approaches to Learning**

Outcomes Birth to Five 2015-16



**Parent, Family and Community Engagement**

**Family Well-being**

**Positive Parent-Child Relationships**

**Families as Lifelong Educators**

Families play a critical role in helping their children be ready for school and for a lifetime of academic success. In Head Start/Early Head Start, parent and family engagement activities are systemic and integrated across program foundations and program impact areas. Because of this, family engagement outcomes are achieved, resulting in children who are healthy and ready for school. Parent and family engagement activities are grounded in positive, ongoing, and goal-oriented relationships with families. Our program measures seven family outcomes that help lead to overall school readiness for children listed on the right and the left.

**Family as Learners**

**Family Engagement in Transitions**

**Family Connections to Peers and Community**

**Families as Advocates and Leaders**