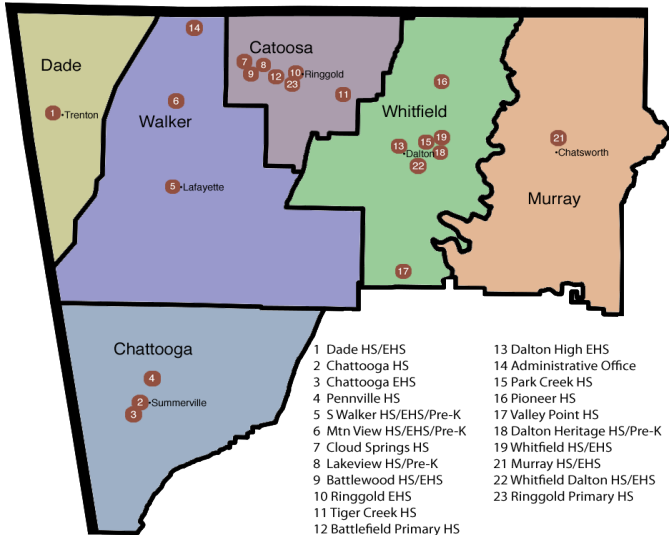


FAMILY RESOURCE AGENCY OF NORTH GEORGIA ANNUAL REPORT 2013-2014

Service Area: Six Northwest Counties in Georgia



County	EHS	HS	HS/PreK	Total
Catoosa	32	105	20	157
Chattooga	48	92		140
Dade	24	37		61
Murray	16	54		70
Walker	48	119	40	207
Whitfield	64	215	20	299
Total children	232	622	80	934
Total Classes	29	35	4	68
# of Staff	91	134	8	233

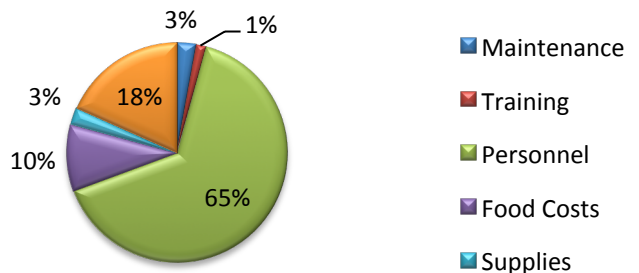
Budget Information

(These totals will be adjusted as needed after the 2014 financial audit is completed)

2013-2014 Expenditures	Mainten ance	Training	Personnel	Food Costs	Supplies	Other	Total
Head Start	\$143,551	\$67,278	\$3,446,494	\$243,793	\$126,112	\$1,037,271	\$5,064,499
Early Head Start	\$104,531	\$69,394	\$2,314,800	\$166,431	\$92,449	\$631,400	\$3,379,005
CACFP-HS				\$359,442			\$359,442
CACFP-EHS				\$127,050			\$127,050
Georgia Pre-K (training and food are included with HS)	\$3,165		\$262,093		\$14,083	\$27,474	\$303,650
Totals	\$251,247	\$136,672	\$6,023,387	\$896,716	\$232,644	\$1,696,145	\$9,233,646

Revenue source	Budget 2014-15
Head Start	\$4,970,649
Early Head Start	\$4,282,625
CACFP-HS	\$371,410
CACFP-EHS	\$163,719
Georgia Pre-K	\$264,577
Totals	\$10,052,980

Where the Money Goes



Fiscal Changes

For the upcoming 2014-2015 budget year, we will have the 5.27% sequestration dollars that were cut in 2013-2014 restored. This will allow us to also convert some Head Start slots to Early Head Start slots, which reallocates the amounts of funds being received in each program. In addition to the restoration funds, we will have a 1.3% COLA increase added to HS and EHS budgets as well. Lastly, the upcoming year will also have 2 additional HS classes converted to EHS slots.

Program Information

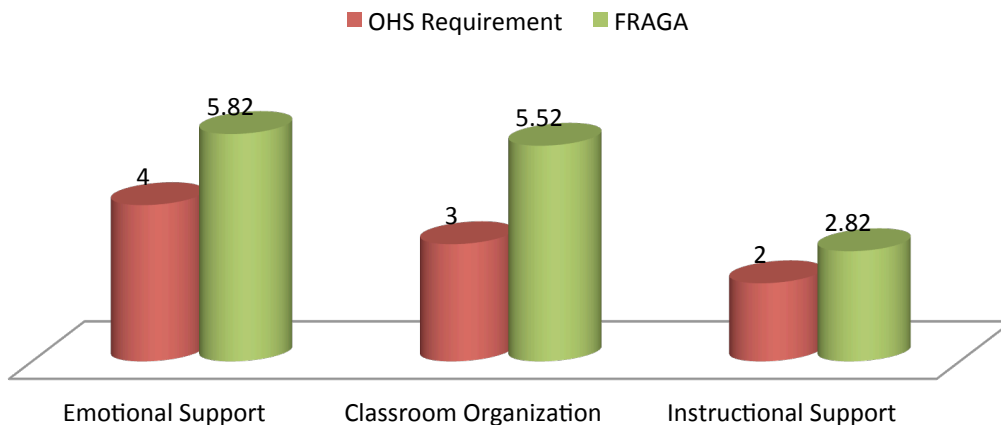
Regulatory Monitoring	
Agency	Compliant
Federal Review	Yes
Licensing Reviews	Yes
Annual Audit	Yes
Quality Rated	Yes
CACFP	Yes

Child/Family Data for 2013-2014		
Criteria	EHS	HS
Total children enrolled	273	885
Pregnant women enrolled	36	n/a
Average monthly enrollment	100%	100%
Over income children	2%	8%
Mid-range income children	9%	17%
Families enrolled	276	812
Children with disabilities	12%	15%
Children with up-to-date, age appropriate health care	76%	86%
Children with up-to-date age appropriate immunizations	92%	99%
Children with up-to-date age appropriate dental care	90%	98%
Families who received some type of assistance, education or intervention	53	49
Homeless families	5	8
Volunteers	124	609
Male Involvement	39	311

CLASS
Classroom Assessment Scoring System

The CLASS tool uses observation results to help improve program quality and outcomes. CLASS focuses on the quality of teacher-child interactions and data gathered is used for program improvement and planning professional development. OHS has a minimum score requirement in three domains: Emotional Support, Classroom Organization, and Instructional Support.

How Do FRAGA Teachers Stack Up? Ahead in CLASS!



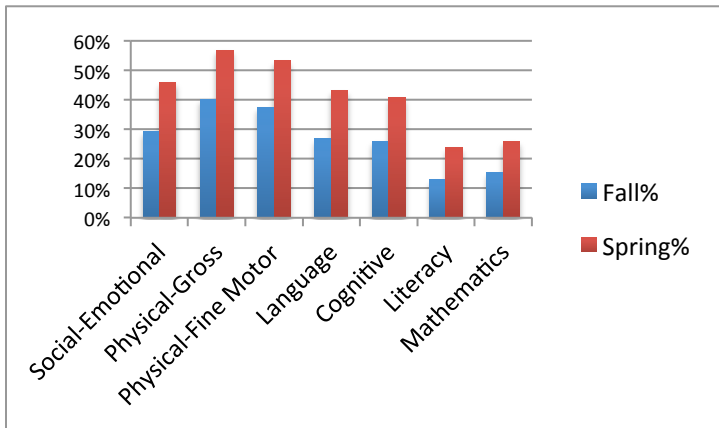
School Readiness

Family Resource Agency assesses and utilizes information gathered throughout the year on children’s status and progress across domains of language and literacy development, cognition and general knowledge, approaches to learning, physical well-being and motor development and social and emotional development that will improve their readiness for kindergarten. Parent and family outcomes are also evaluated to provide support for family engagement in preparing children to be ready for school. School Readiness Goals have been developed by the program in conjunction with the Board of Directors, Policy Council and the local school systems and are ongoing for children ages birth to five. School Readiness Goals can be accessed under the tab for School Readiness at www.fragahs.com

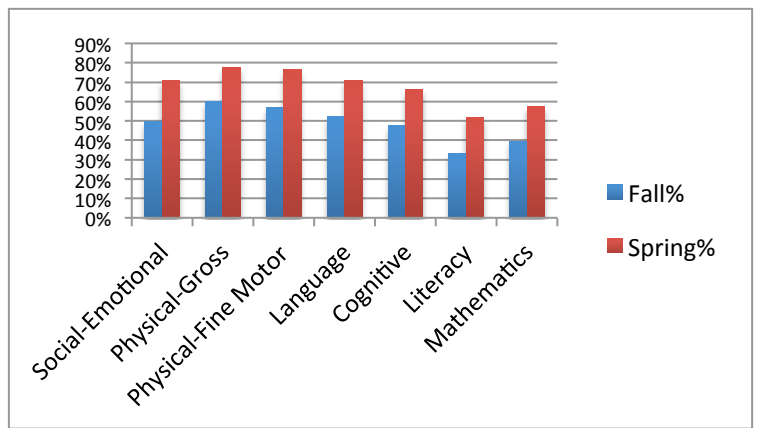
5 Domains of School Readiness

- * **Cognition and General Knowledge**
- * **Physical Development and Health**
- * **Social and Emotional Development**
- * **Language and Literacy**
- * **Approaches to Learning**

FRAGA EHS 2013-2014



FRAGA HS 2013-2014



Parent, Family and Community Engagement

Family Well-being

Positive Parent-Child Relationships

Families as Lifelong Educators

Families play a critical role in helping their children be ready for school and for a lifetime of academic success. In Head Start/Early Head Start, parent and family engagement activities are systemic and integrated across program foundations and program impact areas. Because of this, family engagement outcomes are achieved, resulting in children who are healthy and ready for school. Parent and family engagement activities are grounded in positive, ongoing, and goal-oriented relationships with families. Our program measures seven family outcomes that help lead to overall school readiness for children listed on the right and the left.

Family as Learners

Family Engagement in Transitions

Family Connections to Peers and Community

Families as Advocates and Leaders